

# MUD FLAPS AND FLAP BRACKETS



**INCREASED PROTECTION**  
ENGINEERED FOR **RIDE**  
AND **STYLE**



**FLEET  
ENGINEERS**  
A DIVISION OF TRAMEC SLOAN



For over 50 years, Fleet Engineers has built a solid reputation for producing quality truck and trailer products. As we continue to grow, our commitment to providing superior quality systems solutions and parts to our customers is growing with us. Our team of industry-best professionals is focused on continually expanding and improving our product lines, technology and capabilities to serve the trucking industry and to do our part in keeping your trucks on the road.

*With manufacturing and warehousing facilities stretching across North America, Fleet Engineers is your single-source partner for aerodynamic solutions, door systems, spray control and truck and trailer parts and accessories. Our highly trained sales and customer service teams provide the best, most reliable experience in the industry.*

**CONTACT US TODAY  
TO LEARN MORE.**

**800-333-7890**

**FLEETENGINEERS.COM**

Specifications, descriptions and illustrative materials in this literature are as accurate as known at the time of publication, but are subject to change without notice. AeroFlap® and Hellcat® are registered trademarks of Fleet Engineers. Copyright 2015 Fleet Engineers, Inc.



# MUD FLAPS AND FLAP BRACKETS

**Keep your vehicles cleaner and the roads safer with mud flaps and mounting brackets from Fleet Engineers.**

## Mud Flaps

Fleet Engineers' mud flaps are formulated and blended with a unique compound of elastomers for greater resistance to cold weather cracking and tearing. Our mud flaps are made in the USA from recyclable materials and are resistant to road chemicals, grease, oil, fuel and salt.

## Mud Flap Brackets

Fleet Engineers offers a full line of mud flap mounting brackets including the popular FB-27 Spring Loaded bracket and the standard bar type bracket.

## Conspicuity

From plates to tape to reflectors, Fleet Engineers has a wide assortment of products that meet or exceed the requirements of the DOT-2 Conspicuity law.

## Flap Accessories

In addition to mud flaps and brackets, Fleet Engineers carries a full line of accessories to dress-up your flaps and make them work and look even better.





# MUD FLAPS

- GREATER RESISTANCE** to cold weather cracking and tearing due to a unique compound of elastomers.
- STAYS CLEANER LONGER** and are resistant to road chemicals, grease, oil, fuel, and salt.
- REDUCES ROAD SPRAY.** The ribbed pattern on the anti-spray flap channels water downward. This also helps prevent ice and snow build-up.
- CUSTOMIZABLE** with your company name, logo or trademark. Your message is imprinted using a mylar hot stamping process which sets the color in the flap to assure longevity.
- THREE SIZES, TWO COLORS.** Fleet Engineers flaps are available in black or white and three lengths: 24", 30" or 36".



## **AeroFlap™** – the aerodynamic, environmentally friendly, mud flap designed for fuel efficiency

- INCREASES FUEL EFFICIENCY BY .5-1%.** AeroFlap's unique diamond pattern and innovative design brakes up the trailing air vortex to reduce vehicle drag.
- REDUCES SPRAY** by not atomizing, or "smashing" water droplets, creating a safer environment for everyone on the road.
- ELIMINATES THE NEED FOR ANTI-SAIL BRACKETS** by the way it channels the air and breaks up the trailing air vortex.
- REDUCES MAINTENANCE COSTS** by venting excess heat away from tires and brakes.
- THE ONLY ENGINEERED MUD FLAP SOLUTION** designed to be used with both straight and angled shortie brackets and offered in 24", 27", 30" and 36" heights. Available in widths for wide base (AF-19) or dual tires (AF-24)
- TWO COLOR OPTIONS AVAILABLE,** white or black. Custom colors available upon request. Minimum order quantity and one time set-up fee may be required.



Use in conjunction with the EPA's Smartway Program for truck/trailer aerodynamics



Polypropylene material is uniquely designed to withstand colder temperatures in excess of -30°F



Made from recycled, engineered polymer



Proudly made in the U.S.A.

# BAR BRACKETS AND BRACKET MOUNTS



**BAR TYPE MUD FLAP BRACKETS** feature square spring steel with a black primer finish.

**SEVERAL STANDARD OR SHORTIE STYLES TO CHOOSE FROM:**

- Square Triple Coil Bracket
- Square Double Coil Bracket
- Right Angle Bracket
- 5.00" Offset Bracket
- 9.00" Offset Bracket
- Shortie Square Triple Coil Bracket
- Shortie Square Double Coil Bracket
- Shortie Square Double Coil Extra Long
- Shortie Right Angle Bracket
- Shortie 5.00" Offset Bracket
- Shortie 9.00" Offset Bracket



## Standard or Shortie Point-of Purchase Barrel

Standard Point-of-Purchase Barrel includes 50 right angle, .63" mud flap bracket arms. Shortie Point-of-Purchase Barrel includes 40 right angle, .63" mud flap bracket arms.

## Bar Bracket Cast Mounts

**ONE-PIECE, BLACK PRIMED CAST MOUNTS** are made of tough high-impact steel which provides maximum strength and longer life.



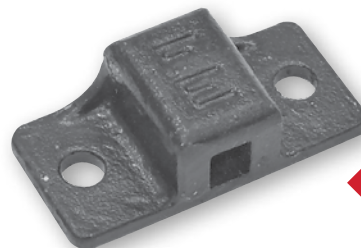
Standard Cast Vertical Mount



Standard "Narrow" Cast Mount



Cast End Mount



Standard Cast "Regular" Mount

# HELLCAT<sup>®</sup> SPRING LOADED BRACKETS

**Hellcat<sup>®</sup> – simply the most attractive and functional spring loaded mud flap bracket available anywhere.**

**SELF-CENTERING FRAME SEAT** accepts studs for mounting in either a 1.125" or 2.5" hole pattern.

**PIVOTS 180°** and springs back into its' original position if caught by landing gear.

**REFLECTORS VS. TAPE** Using reflectors to meet DOT-C2 requirements provides huge benefits over tape. Reflectors are smaller, more durable and carry a full manufacturer's warranty against defects. And because the three reflectors are cradled in the tracks, they are less likely to be damaged by routine or incidental contact.



# FB-27 SPRING LOADED BRACKETS

## Straight or Shortie FB-27 Brackets

- **PATENTED SELF-CENTERING FRAME SEAT** assures resetting to original position.
- **SLOT ARRANGEMENT CONFORMS** to TTMA flap hole pattern for straight brackets.
- **STRAIGHT OR SHORTIE** brackets available with or without reflective tape.
- **IDEAL** for heavy-duty spray suppression flaps.
- **AVAILABLE IN** black e-coat or polished stainless steel finish.



## Plastic End Cap for FB-27 Brackets

- **STAYS SECURELY IN PLACE** with bolt through tab - never lose an end cap again!
- As an added benefit, the red reflector increases safety and looks great.



## Attach mud flaps to any type of bracket

- All necessary hardware to mount two flaps is in one handy package!
- Available in stainless steel or zinc
- Each package contains eight bolts (5/16" x 1.25 lg), eight nuts (5/16") and sixteen washers (3/8").





# CONSPICUITY PRODUCTS

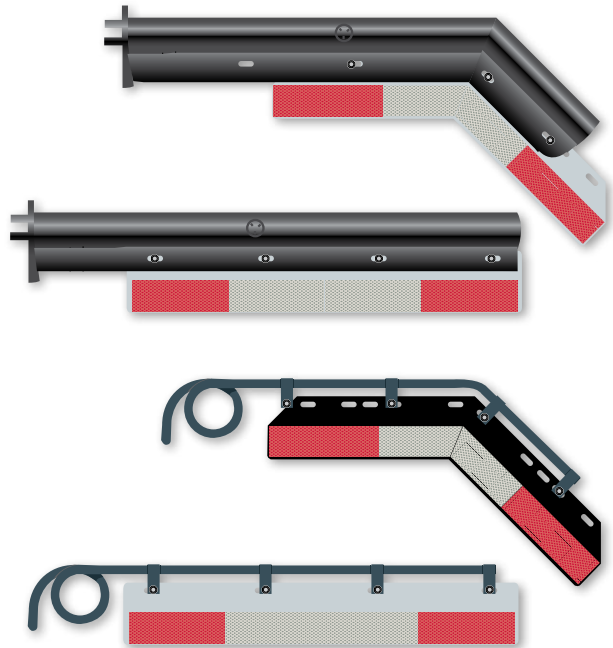
## FB-27 and Bar Brackets with Reflectors

- REFLECTORS are secured in place with tabs on the black plastic holders.
- REFLECTORS AND HOLDERS can be purchased individually to use with existing brackets or other applications.
- MEETS DOT-2 conspicuity requirements.



## Universal Conspicuity Plates

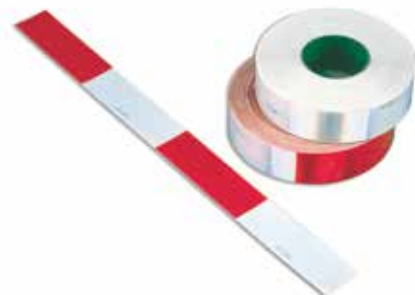
- UNIVERSAL easily attach roadside or curbside.
- VERSATILE PLATES CAN BE used with any straight, shortie, bar or spring loaded bracket.
- REFLECTIVE PLATES can be purchased individually to use with existing brackets or other applications.
- MEETS DOT-2 conspicuity requirements.
- FINISH OPTIONS: Aluminum, e-coated steel and stainless steel.



## DOT-C2 Reflective Tape

Designed for use on trucks and trailers to provide a clear warning to oncoming motorists. This tape is DOT-C2 certified, exceeds NHTSA requirements and highly reflective, even up to a 90-degree angle.

*Available in red and white roll, all white roll or red and white strip*





# FLAP ACCESSORIES

## Adjust-A-Mount® - the only way to get Spring Loaded Mud Flap brackets positioned perfectly.

- EASILY POSITIONS THE BRACKET.** Enables spring loaded brackets to move forward, back, up or down.
- ALLOWS FOR USE** of existing holes in the frame.
- MAXIMUM OFFSET** of 5" and can be raised up to 4-15/16" (2-1/2" offset) or lowered to 3-9/16" (3-1/2" offset).
- UNIVERSAL**, use it on the left side or right side with either shortie or straight mud flap brackets.



## FB-27 Removable Adapter and Universal Mounting Adapter



### FB-27 Removable Adapter

- BLACK PRIMED CAST MOUNTS** are made of tough high-impact steel.
- DETACHABLE BRACKET DESIGN** allows for easy removal of flap brackets.



### Universal Mounting Adapter

- Can be used in various mounting applications.
- Part number represents one adapter.

# FLAP ACCESSORIES

## Decorative Flap Plates

- RUST-PROOF** stainless steel plates with mirror finish dress up mud flaps.
- PRE-PUNCHED SQUARE HOLES** eliminate stud breakage and accommodate stainless steel carriage bolts (included).
- UPPER PLATE** is available either embossed or with reflective tape to meet conspicuity requirements.
- EMBOSSED LOWER PLATE** adds strength and improves appearance.
- 24" WIDTH** works well with most mud flaps.



## Mud Flap Mounting Angle and Retaining Strap

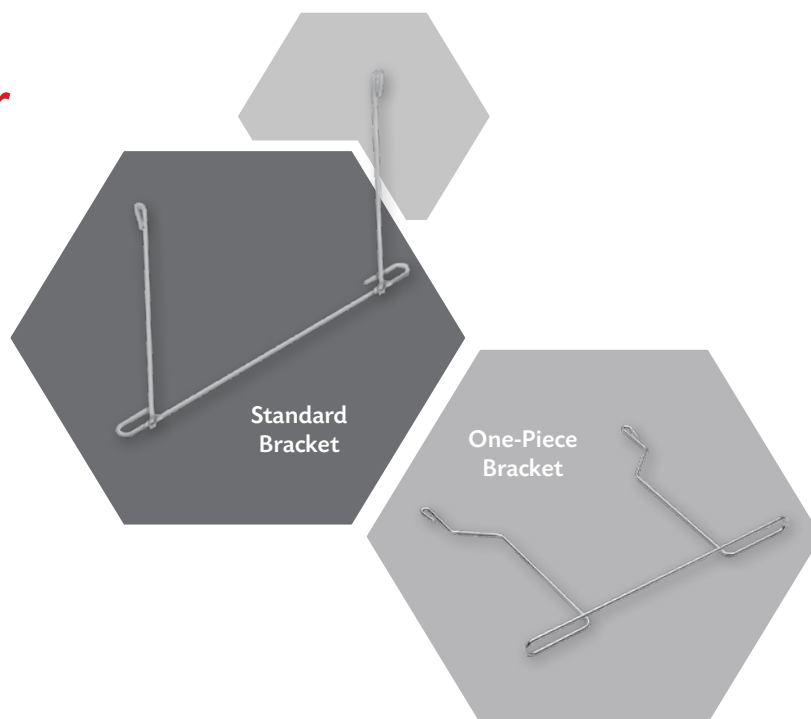
- SECURELY** holds mud flaps in place.
- REFLECTIVE TAPE** is available on retaining strap to meet conspicuity requirements.



# FLAP ACCESSORIES

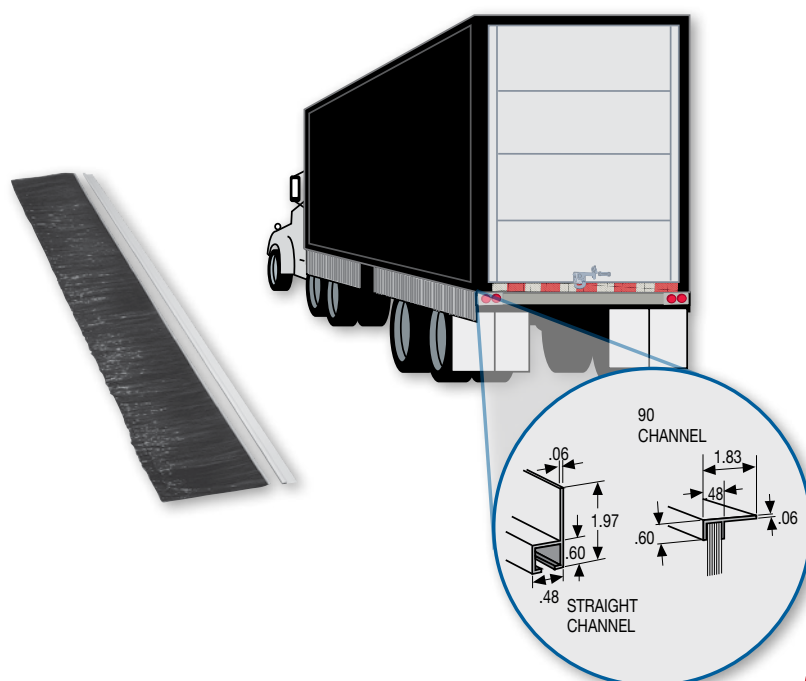
**Anti-Sail Brackets keep mud flaps in place so they don't curl, tear or wear out prematurely.**

- **ANTI-SAIL BRACKETS** keep mud flaps secure, increases safety and keeps flaps from tearing and wearing out.
- **INCREASES LONGEVITY** of mud flaps by keeping them in position.
- **SEVERAL STYLES AVAILABLE:** standard and one-piece design.
- **ONE-PIECE DESIGN** accepts mud flaps up to 1.00" thick.
- **AVAILABLE IN** black primed, stainless steel, galvanized or chrome finish.



## Brush Skirting

- **SIGNIFICANTLY REDUCES SPRAY** to improve both driver and motorist visibility.
- **FLEXIBLE FILAMENT SKIRTING** won't trap hot air or interfere with tires.
- **BRUSH** helps keep spray off sides of trailer.





## ***You Can Expect More***

Fleet Engineers designs, manufactures and distributes comprehensive product line solutions for aerodynamics, door systems, spray control and truck and trailer parts and accessories designed to perform in the most demanding conditions. Every one of our products comes with our promise to always provide the best quality products, personalized service and competitive pricing possible.

*Look for the Fleet Engineers brand through our network of distributors, dealers and OEMs across North America, or visit us at **fleetengineers.com** to learn more about how we are driving solutions to the trucking industry.*

---

### PRODUCT LINE SOLUTIONS

---



*Aerodynamic Solutions*



*Door Systems*



*Spray Control*



*Truck & Trailer Parts & Accessories*



**FLEETENGINEERS.COM**

1800 EAST KEATING AVENUE ■ MUSKEGON MICHIGAN 49442 ■ 231-777-2537 ■ 800-333-7890 ■ FAX: 231-773-5500