

SAVE-A-LOAD®

ADVANCED CARGO MANAGEMENT SOLUTIONS FOR
SECURING LOADS & REDUCING TRANSIT DAMAGE



SL-30 HEAVY DUTY LOAD BARS

84" - 114" length for use in beverage trucks, dry van, reefers, furniture trucks and more.

SL-20 MEDIUM DUTY LOAD BARS

69" - 96" length for use in city delivery, conventional vans, landscape utility, large walk-ins, Sprinter vans and more.

FEATURES & BENEFITS

- Save-A-Load bars hold position even when the trailer walls flex due to road conditions, vibrations or temperature fluctuations
- Internal pressure release valve prevents over compressing to minimize trailer/body wall damage
- Easy release push button instantly remove bars from position with one hand, with or without gloves
- Effortless and safe for operators with balanced weight distribution, no pinch points or heavy castings
- Aluminum and composite materials are corrosion free and safe in sensitive FDA load environments
- Lightweight system makes load bars and hoops easy to install, remove and store
- Pressurized spring holds the bar in place while adding multiple bars/hoops on the same load - no dropping to the floor
- Use vertical, horizontal or diagonal with versatile foot configurations
- Designed & Made in the USA!

COLORS:

Select from a variety of finishes and a wide spectrum of colors.

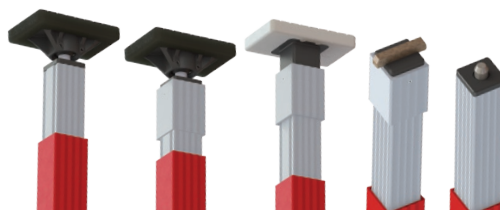


NON-SPARKING HARDWARE:

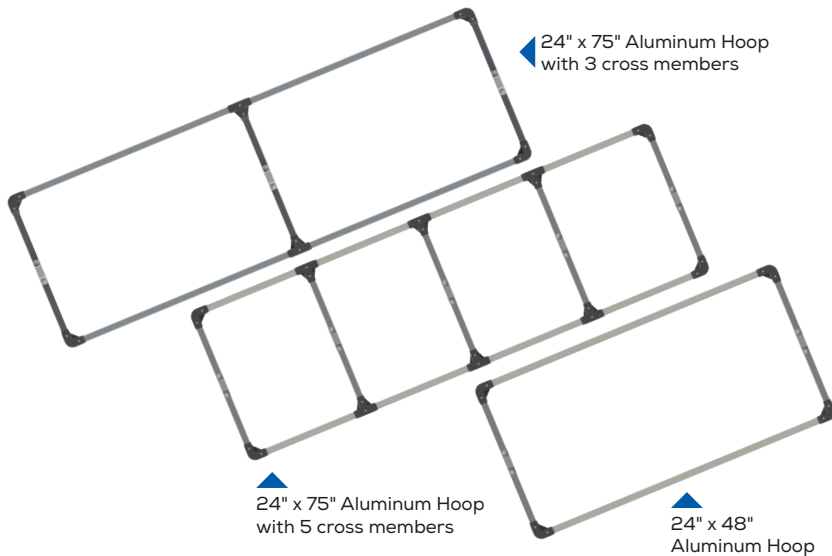
Hazards exist even in cargo. Non-sparking, stainless steel hardware adds protection from dangerous gases, solvents, liquids, vapors or dust on cargo loads.

FOOT CONFIGURATIONS:

Adjustable Articulating/Fixed, Articulating, Fixed, E-Track and F-Track feet available in multiple configurations.



SAVE-A-LOAD®



24" x 75" Aluminum Hoop with 3 cross members

24" x 75" Aluminum Hoop with 5 cross members

24" x 48" Aluminum Hoop

SAVE-A-LOAD® TOP PRODUCTS

SL-32 Hydraulic Load Bar with Fixed Ends, P/N 080-01008

SL-31 Hydraulic Load Bar with Articulating Ends, P/N 080-01000

24" x 75" Hoops with 5 Crossmembers, P/N 080-HP11-UDR

WARRANTY AND REPLACEMENT PARTS

Save-A-Load bars are built for excellent performance. Like all bars, they will work better when used frequently, taken care of and stored properly. Mishandling may cause damage and require replacement parts. Genuine replacement parts are available on all load bars and hoops.

All Save-A-Load bars have a conditional Lifetime Warranty to the original purchaser on Save-A-Load products. Please visit our website for complete details.

ACCESSORIES



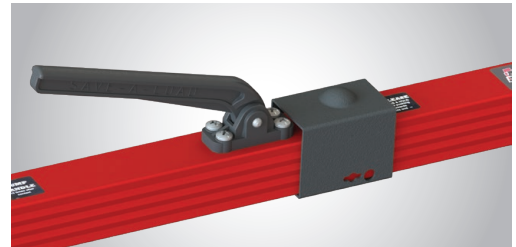
HOOPS: Increase the footprint area by using structurally engineered aluminum hoops. Heavy or bulky items will stay safe and secure in cargo space. Shipped unassembled, assembled, or attached to the bar.

LIGHTWEIGHT

3 CROSSMEMBER

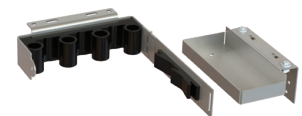
5 CROSSMEMBER

ALUMINUM



LOCKING SLEEVE: Secure a load bar anywhere with easy to use locking sleeve. Simply slide it over the release button and lock with a padlock (not included).

SECURITY



SECURITY RACK: Protect and secure load bar investments and lock and/or store up to three load bars with our exclusive Save-A-Bar Rack. Vertical and horizontal options.

SECURITY

STORAGE